

Splashing in puddles

Discovering and exploring puddles in the playground to begin using mathematical language associated with size.

EYFS

Early learning goals: Mathematics, Understanding the world

Activity type: individual/small groups with an adult

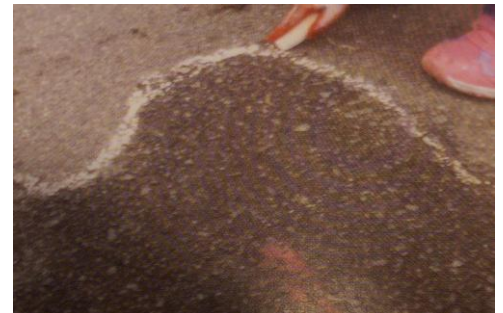
Length of activity: 20 minutes (plus time taken for puddle to evaporate)

Outdoor requirements: playground on a warm, sunny day

Resources: chalk, ipad/camera, water containers, wellies

Starter activity

Make some puddles in the playground where they will not be disturbed. Ask the children to draw around a puddle using chalk.



Main activities

Leave the puddle for some time. Ask the children to find their puddle and draw around it again - has it got bigger or smaller? Which puddle is the biggest/smallest? How many children could you fit into the puddle?



Plenary activity

Discuss with children what might have happened to the puddle - what would make it disappear? Link it to the weather. See if children can work out a way to make the puddle bigger.

Specific risk assessment

Make sure that activity is carried out on a non-slippery surface.